

NEW!



Atlas Engineering

a PennEngineering® company

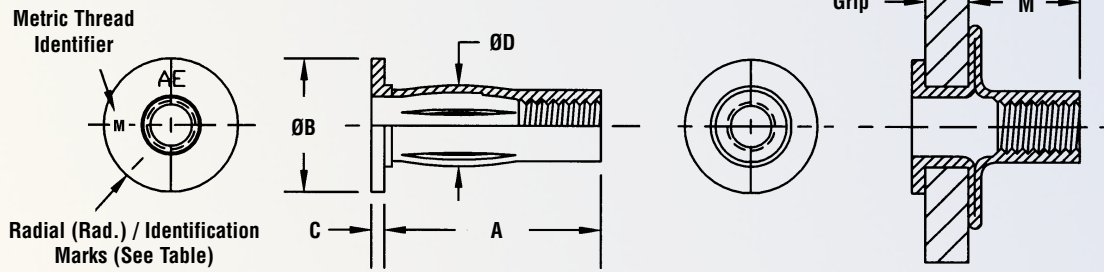
*Bulletin **PT***

PlusTite® Insert Series



PT

PRE-BULBED INSERT



This blind insert features a pre-bulbed slotted body that folds into four petals upon installation gripping the backside of the parent material. It can be installed into single, variable, or multiple thickness materials using Atlas Series 800 pneumatic tools or an Atlas Series AE 40 pneumatic/hydraulic tool.

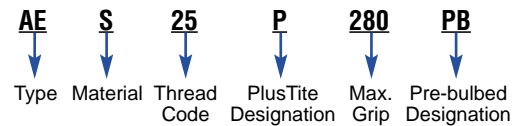
Features include:

- Superior pullout resistance in plastics and thin sheet metal.
- Internal formed threads are compatible with unified grade 5 or metric class 9.8 screws.
- Shoulder provides self-locating feature.
- All surfaces are plated for superior corrosion resistance.



Installs into single, variable, or multiple thickness materials.

Part Number Designation



All dimensions are in inches.

Thread Size	Part Number	Grip Range	Identification Mark	A ±.015	ØB Nom.	C Nom.	ØD Max.	M Max.	Hole Size In Sheet +.006 -.000
1/4-20	AES25P280PB	.020 - .280	None	1.000	.625	.057	.384	.520	.390
1/4-20	AES25P500PB	.280 - .500	1 Rad.	1.235	.625	.057	.384	.520	.390
5/16-18	AES31P280PB	.020 - .280	None	1.118	.750	.062	.482	.570	.488
5/16-18	AES31P500PB	.280 - .500	1 Rad.	1.348	.750	.062	.482	.570	.488

All dimensions are in millimeters.

Thread Size x Pitch	Part Number	Grip Range	Identification Mark	A ±0.38	ØB Nom.	C Nom.	ØD Max.	M Max.	Hole Size In Sheet +0.15
M6 x 0.1	AESM6P7.1PB	0.50 - 7.1	None	25.4	15.88	1.45	9.75	13.2	9.91
M6 x 0.1	AESM6P12.7PB	7.1 - 12.7	1 Rad.	31.34	15.88	1.45	9.75	13.2	9.91
M8 x 1.25	AESM8P7.1PB	0.50 - 7.1	None	28.4	19.05	1.57	12.25	14.48	12.4
M8 x 1.25	AESM8P12.7PB	7.1 - 12.7	1 Rad.	34.24	19.05	1.57	12.25	14.48	12.4

NOTE: The Atlas pneumatic tools shown in Bulletin AEPT will install PlusTite series inserts. Material hardness will affect the published grip ranges. Trial installations of this product in your application are recommended. We will be happy to provide samples for this purpose.

MATERIAL & FINISH SPECIFICATIONS

Threads	Material	Standard Finish
Unified 2B/21 Per ASME B1.1 Metric 6H/21 Per ASME B1.13M	Steel, C-1008 or C-1010, or Equivalent	Zinc Yellow Plate per ASTM B 633, Fe/Zn 8, Type II, .0003" thick with clear protective coating

© 2002 Atlas Engineering. PlusTite is a brand name and registered trademark for products manufactured exclusively by Atlas Engineering.

Specifications subject to change without notice.

Atlas Engineering

a PennEngineering® company

1510 St. Clair Avenue • Kent, OH 44240 • Phone: 330-676-1006 • Fax: 330-676-0399
Toll Free: 1-877-682-2505 • E-mail: atlas@atlas-eng.com • Web Site: www.atlas-eng.com

